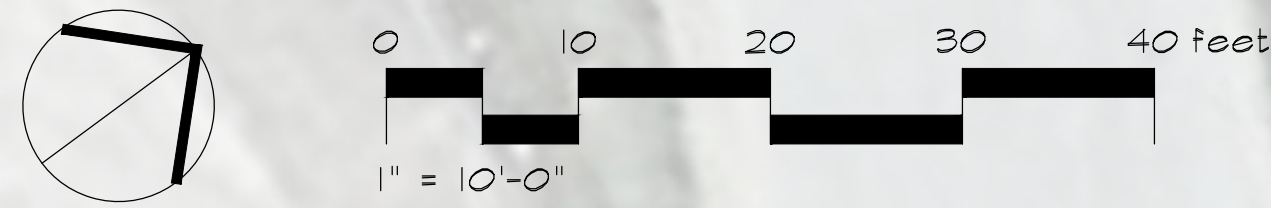
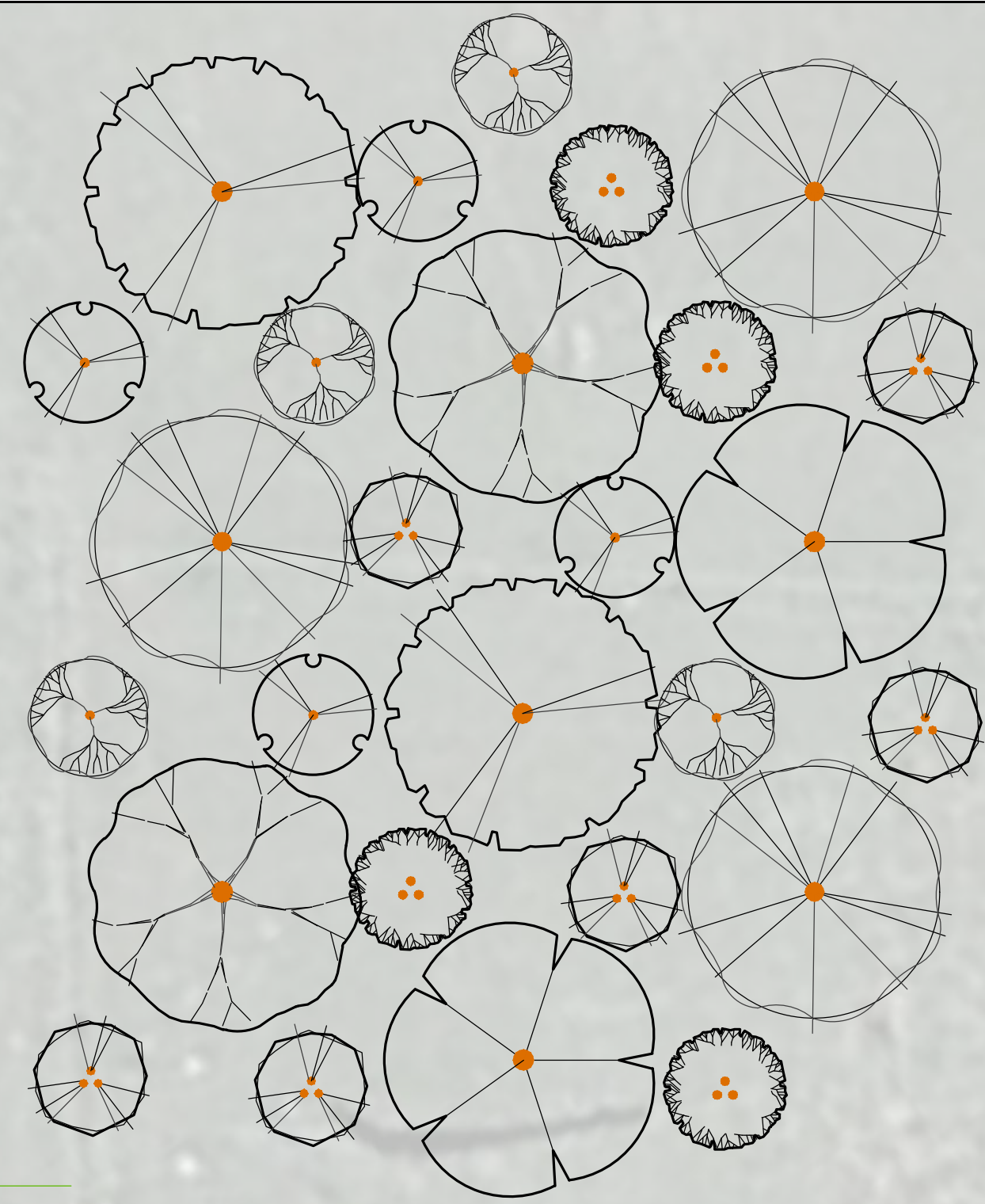


SIGN 1

SCALE: 1" = 10'-0"
VERIFY ALL DIMENSIONS



SIGN 1 PLANTINGS ONLY
TOTAL = 9,454 SF



PLANT SCHEDULE SIGN 1

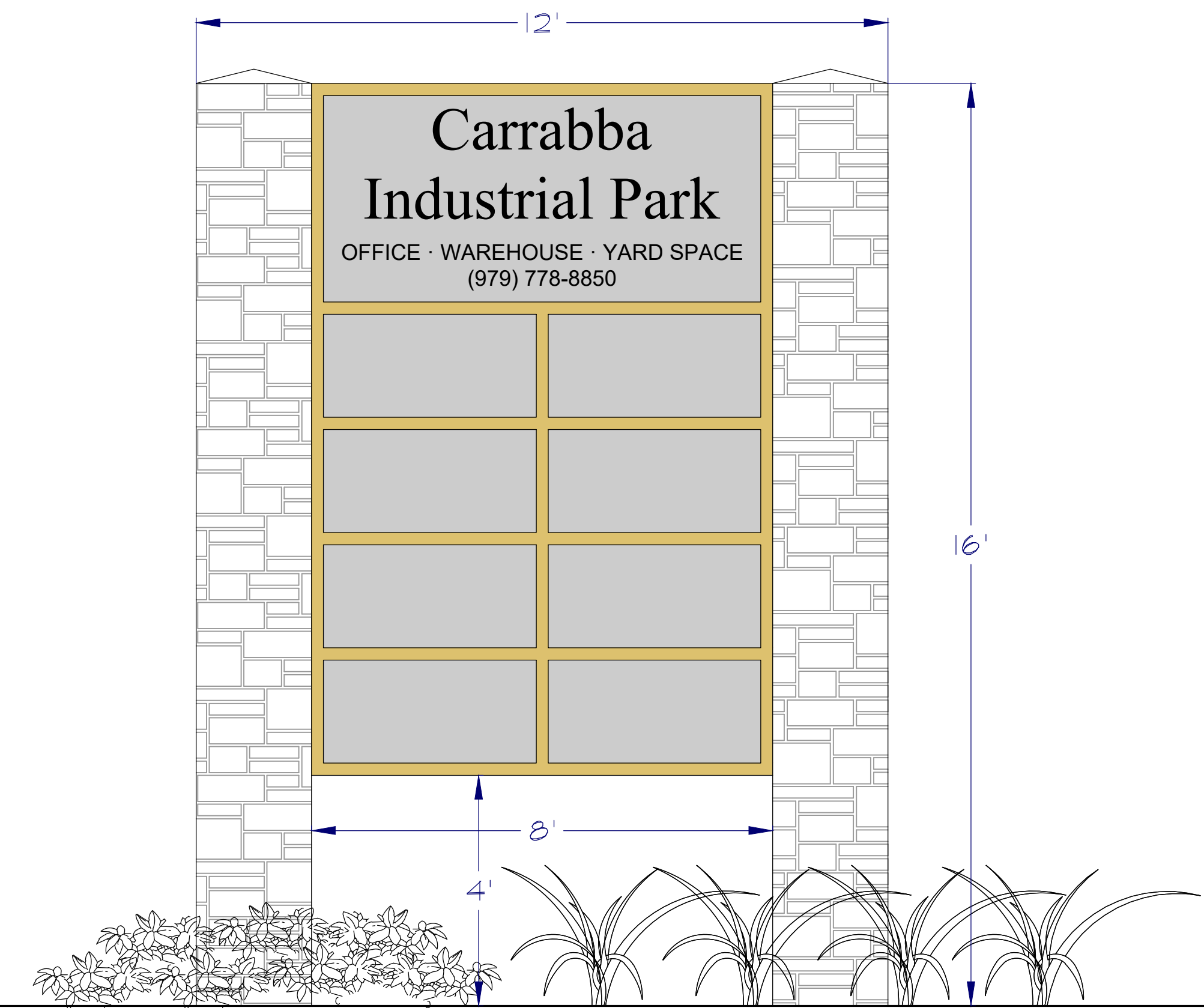
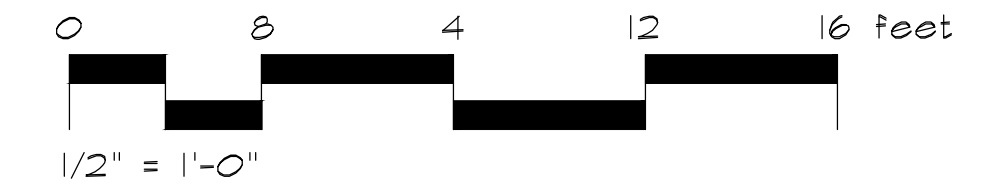
CANOPY TREES	QTY	COMMON / BOTANICAL NAME	CONT.	GAL.	TRUNK
	2	Burr Oak / <i>Quercus macrocarpa</i>	As Needed	1.5"Gal	
	2	Chinese Pistache / <i>Pistacia chinensis</i>	As Needed	1.5"Gal	
	2	Lacebark Elm / <i>Ulmus parvifolia</i>	As Needed	1.5"Gal	
	3	Live Oak / <i>Quercus virginiana</i>	As Needed	1.5"Gal	
NON CANOPY TREES	QTY	COMMON / BOTANICAL NAME	CONT.	GAL.	TRUNK
	4	Chilean Mesquite / <i>Prosopis chilensis</i>	As Needed	1.5"Gal	
	6	Pride of Houston Yaupon / <i>Ilex vomitoria</i> 'Pride of Houston'	As Needed	1.5"Gal	3 canes min.
	4	Vitex Tree / <i>Vitex agnus-castus</i>	As Needed	1.5"Gal	3 canes min.
SHRUBS	QTY	COMMON / BOTANICAL NAME	SIZE		
	6	Maiden Grass / <i>Miscanthus sinensis</i> 'Gracillimus'	3 gal		
	5	Red Yucca / <i>Hesperaloe parviflora</i>	3 gal		

GRAVEL AREA
(144 SF, 51 LF)



3 ELEVATION

SCALE: 1/2" = 1'-0"
VERIFY ALL DIMENSIONS



Submittals	BY



HWY 21
BRYAN, TX

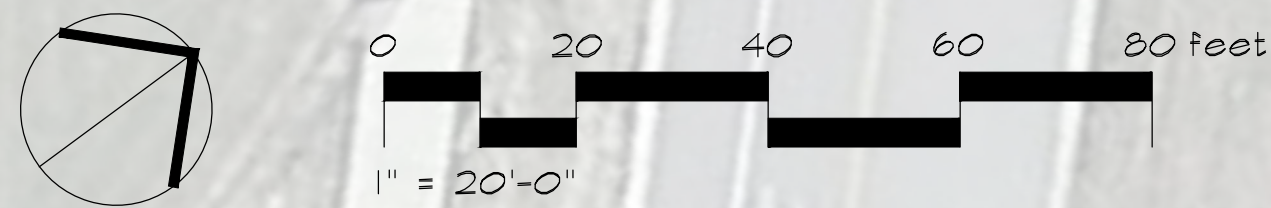
the land design group inc.
547 william d. fitch pkwy #108 college station, texas 77845 · 979.846.2775

CARRABBA INDUSTRIAL PARK

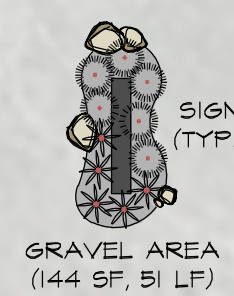
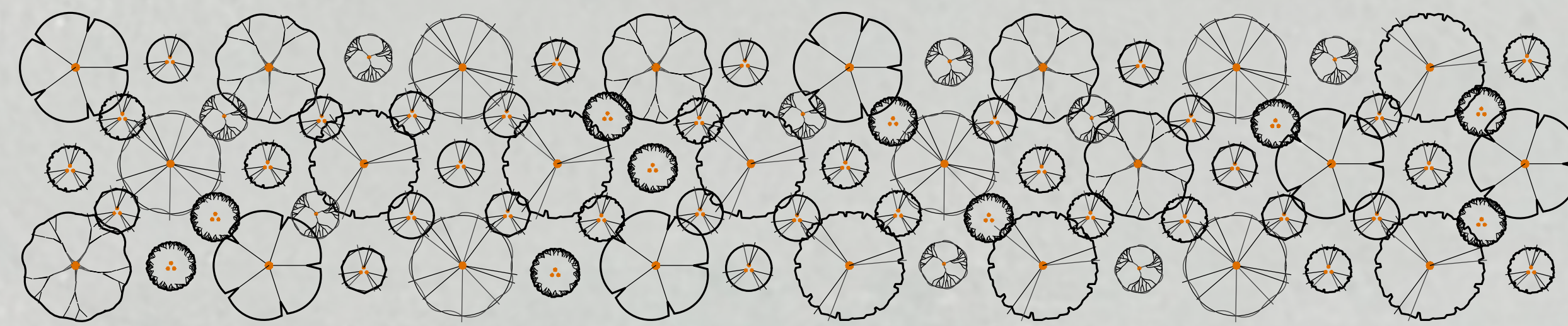
This drawing is the property of the land design group inc. and is not to be reproduced, stored in a retrieval system, or transmitted in any form or by any means, electronic, mechanical, photocopying, recording, or by any information storage and retrieval system, without the prior written permission of the land design group inc. The land design group inc. is not responsible for any errors or omissions in this drawing. The land design group inc. is not responsible for any errors or omissions in this drawing. The land design group inc. is not responsible for any errors or omissions in this drawing.

2 SIGN 2

SCALE: 1" = 20'-0"
VERIFY ALL DIMENSIONS



SIGN 2 PLANTINGS ONLY
TOTAL = 16,354 SF



PLANT SCHEDULE SIGN 2

CANOPY TREES	QTY	COMMON / BOTANICAL NAME	CONT.	GAL.	TRUNK
	7	Burr Oak / <i>Quercus macrocarpa</i>	As Needed	1.5"Gal	
	6	Chinese Pistache / <i>Pistacia chinensis</i>	As Needed	1.5"Gal	
	5	Lacebark Elm / <i>Ulmus parvifolia</i>	As Needed	1.5"Gal	
	6	Live Oak / <i>Quercus virginiana</i>	As Needed	1.5"Gal	
NON CANOPY TREES	QTY	COMMON / BOTANICAL NAME	CONT.	GAL.	TRUNK
	8	Chilean Mesquite / <i>Prosopis chilensis</i>	As Needed	1.5"Gal	
	10	Grape Myrtle / <i>Lagerstroemia x 'Tuscanora'</i>	As Needed	1.5"Gal	3 canes min.
	14	Palo Verde / <i>Parkinsonia aculeata</i>	As Needed	1.5"Gal	3 canes min.
	11	Pride of Houston Yaupon / <i>Ilex vomitoria</i> 'Pride of Houston'	As Needed	1.5"Gal	3 canes min.
	10	Vitex Tree / <i>Vitex agnus-castus</i>	As Needed	1.5"Gal	3 canes min.
SHRUBS	QTY	COMMON / BOTANICAL NAME	SIZE		
	6	Maiden Grass / <i>Miscanthus sinensis</i> 'Gracillimus'	3 gal		
	5	Red Yucca / <i>Hesperaloe parviflora</i>	3 gal		



DRAWN CT
CHECKED AK
DATE 9.30.22
SCALE VARIES
JOB NO. LDG 22.107.11
SHEET

LS 2
OF